



LOCAL GOVERNMENT INFRASTRUCTURE PLAN
PLANS FOR TRUNK INFRASTRUCTURE
STORMWATER NETWORK

EXISTING TRUNK DRAINAGE

- + Gully
- Bridge
- ⌒ Culvert
- Open Drain
- Pipe

FUTURE DRAINAGE

- ▨ Underground Stormwater Works

GENERAL

- Natural Drainage Cover
- ▨ Stormwater Service Catchment
- ▭ Property Boundary

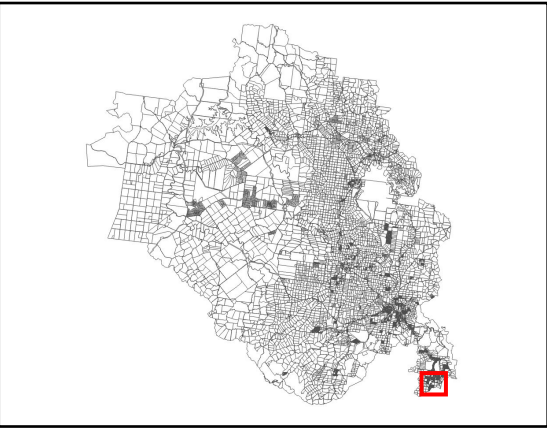
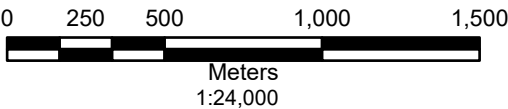
© Copyright South Burnett Regional Council 2018
While every care is taken to ensure the accuracy of this map, South Burnett Regional Council makes no representations or warranties about its accuracy, reliability, completeness or suitability for any particular purpose and disclaims all responsibility and all liability (including without limitation, liability in negligence) for all expenses, losses, damage (including indirect or consequential damage) and costs which might incur as a result of the data being inaccurate or incomplete in any way and for any reason.

© The State of Queensland (Natural Resources and Mines) [2018].
Based on Cadastral Data provided with the permission of the Department of Natural Resources and Mines (Current as at January 2018). While every care is taken to ensure the accuracy of this data, the Department of Natural Resources and Mines makes no representations or warranties about its accuracy, reliability, completeness or suitability for any particular purpose and disclaims all responsibility and all liability (including without limitation, liability in negligence) for all expenses, losses, damages (including indirect or consequential damage) and costs which you might incur as a result of the data being inaccurate or incomplete in any way and for any reason.

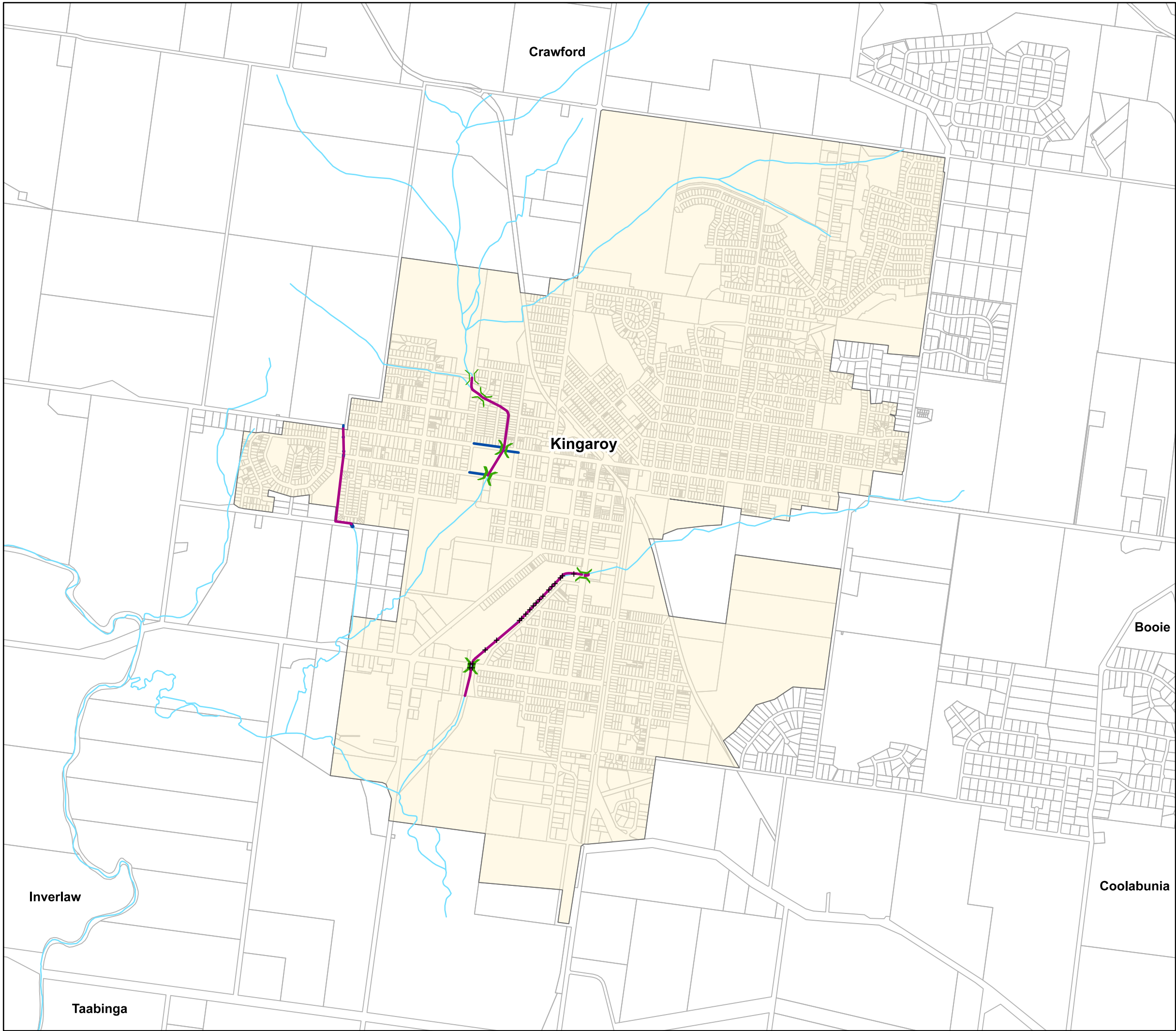
Date: 22/08/2018 START DATE 01/07/2019

DATUM:
Geocentric Datum
of Australia 1994
(GDA94 - Zone 56)

AMENDMENT DATE
AMENDMENT N°



LGIP-SW-Blackbutt



**LOCAL GOVERNMENT INFRASTRUCTURE PLAN
PLANS FOR TRUNK INFRASTRUCTURE
STORMWATER NETWORK**

EXISTING TRUNK DRAINAGE

- + Gully
- Bridge
- ⌵ Culvert
- Open Drain
- Pipe

FUTURE DRAINAGE

- ▨ Underground Stormwater Works

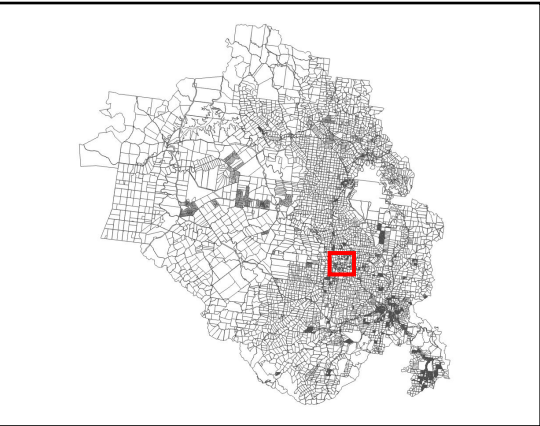
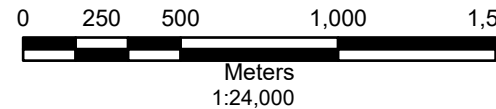
GENERAL

- Natural Drainage Cover
- ▨ Stormwater Service Catchment
- ▭ Property Boundary

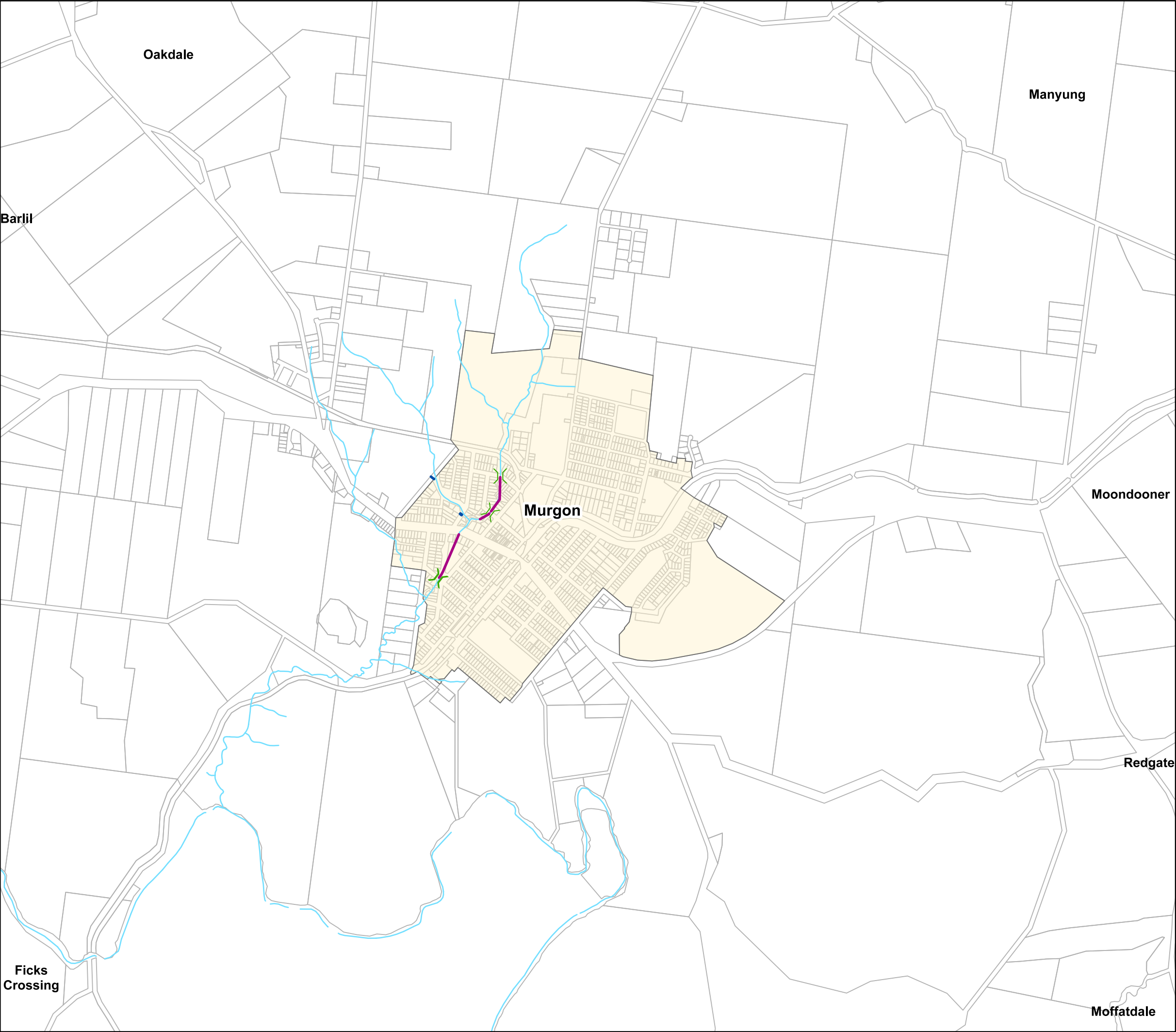
© Copyright South Burnett Regional Council 2018.
While every care is taken to ensure the accuracy of this map, South Burnett Regional Council makes no representations or warranties about its accuracy, reliability, completeness or suitability for any particular purpose and disclaims all responsibility and all liability (including without limitation, liability in negligence) for all expenses, losses, damage (including indirect or consequential damage) and costs which might incur as a result of the data being inaccurate or incomplete in any way and for any reason.

© The State of Queensland (Natural Resources and Mines) [2018].
Based on Cadastral Data provided with the permission of the Department of Natural Resources and Mines (Current as at January 2018). While every care is taken to ensure the accuracy of this data, the Department of Natural Resources and Mines makes no representations or warranties about its accuracy, reliability, completeness or suitability for any particular purpose and disclaims all responsibility and all liability (including without limitation, liability in negligence) for all expenses, losses, damages (including indirect or consequential damage) and costs which might incur as a result of the data being inaccurate or incomplete in any way and for any reason.

Date: 22/08/2018 START DATE 01/07/2019
N DATUM: AMENDMENT DATE
Geocentric Datum AMENDMENT N°
of Australia 1994
(GDA94 - Zone 56)



LGIP-SW-Kingaroy



**LOCAL GOVERNMENT INFRASTRUCTURE PLAN
PLANS FOR TRUNK INFRASTRUCTURE
STORMWATER NETWORK**

EXISTING TRUNK DRAINAGE

- + Gully
- Bridge
- ⌒ Culvert
- Open Drain
- Pipe

FUTURE DRAINAGE

- ▨ Underground Stormwater Works

GENERAL

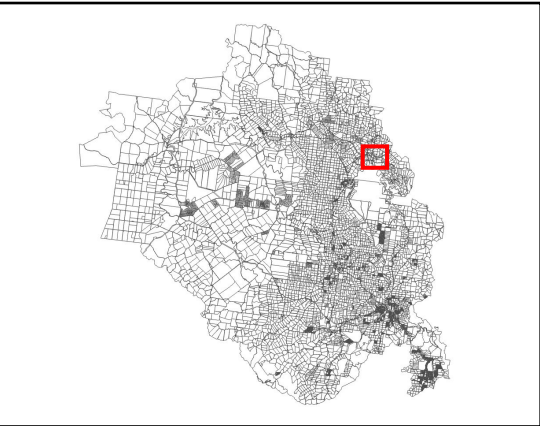
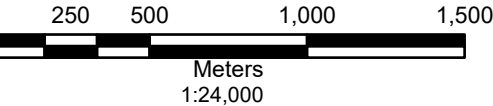
- Natural Drainage Cover
- Stormwater Service Catchment
- Property Boundary

© Copyright South Burnett Regional Council 2018
While every care is taken to ensure the accuracy of this map, South Burnett Regional Council makes no representations or warranties about its accuracy, reliability, completeness or suitability for any particular purpose and disclaims all responsibility and all liability (including without limitation, liability in negligence) for all expenses, losses, damage (including indirect or consequential damage) and costs which might incur as a result of the data being inaccurate or incomplete in any way and for any reason.

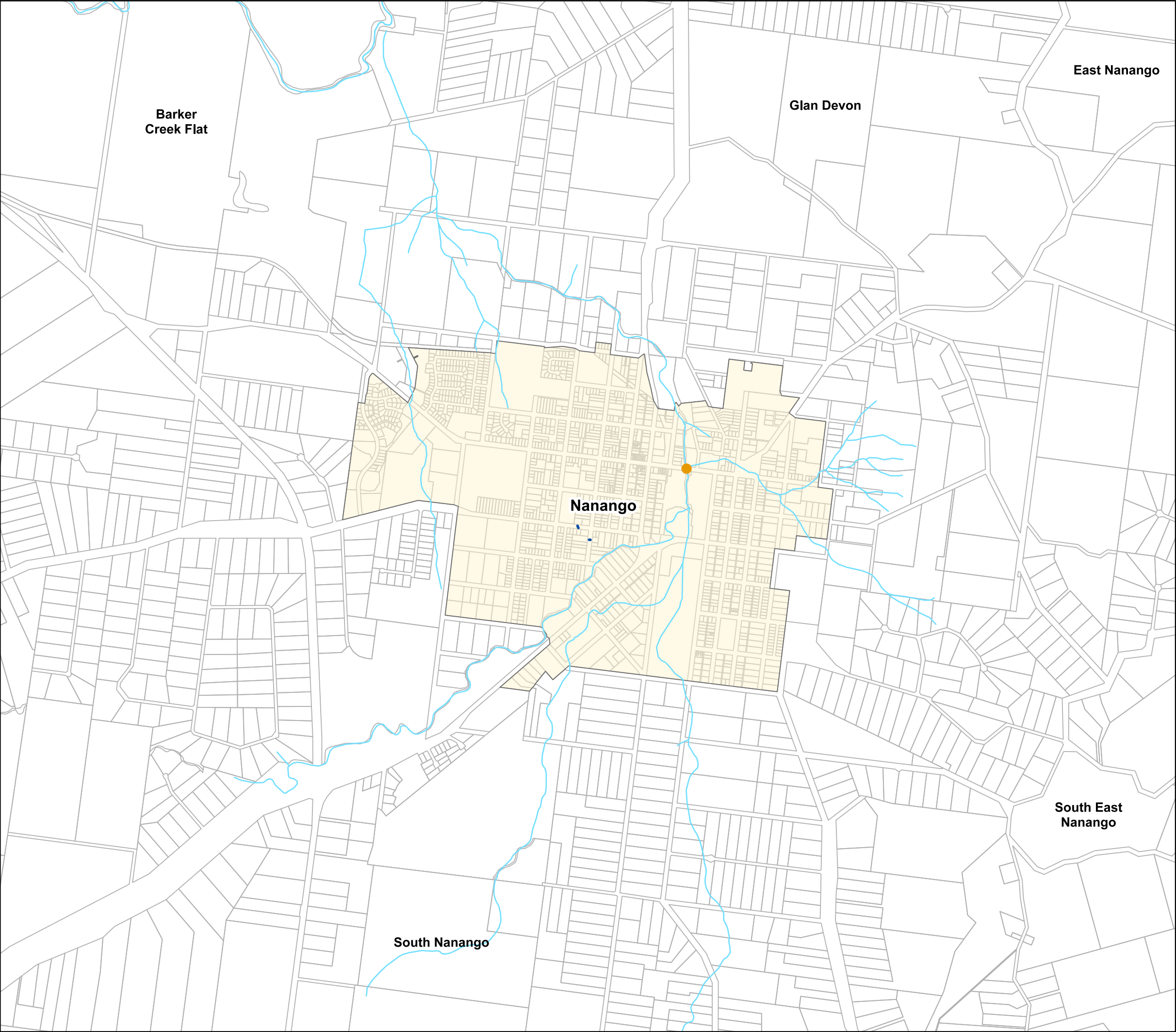
© The State of Queensland (Natural Resources and Mines) [2018].
Based on Cadastral Data provided with the permission of the Department of Natural Resources and Mines (Current as at January 2018). While every care is taken to ensure the accuracy of this data, the Department of Natural Resources and Mines makes no representations or warranties about its accuracy, reliability, completeness or suitability for any particular purpose and disclaims all responsibility and all liability (including without limitation, liability in negligence) for all expenses, losses, damages (including indirect or consequential damage) and costs which you might incur as a result of the data being inaccurate or incomplete in any way and for any reason.

Date: 22/08/2018 START DATE 01/07/2019

DATUM: Geocentric Datum of Australia 1994 (GDA94 - Zone 56) AMENDMENT DATE AMENDMENT N°



LGIP-SW-Murgon



**LOCAL GOVERNMENT INFRASTRUCTURE PLAN
PLANS FOR TRUNK INFRASTRUCTURE
STORMWATER NETWORK**

EXISTING TRUNK DRAINAGE

- + Gully
- Bridge
- ⌒ Culvert
- Open Drain
- Pipe

FUTURE DRAINAGE

- ▨ Underground Stormwater Works

GENERAL

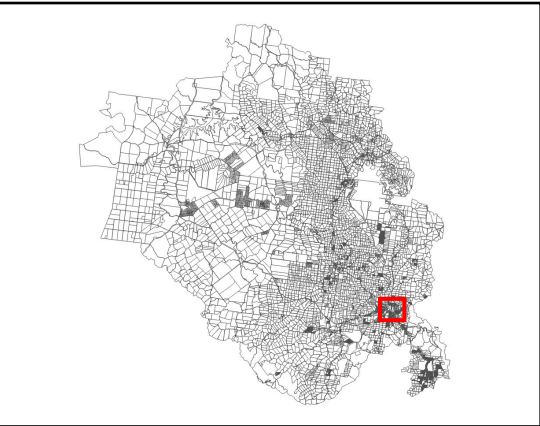
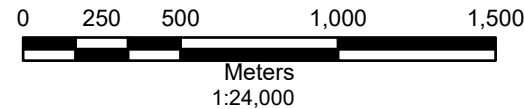
- Natural Drainage Cover
- ▨ Stormwater Service Catchment
- ▭ Property Boundary

© Copyright South Burnett Regional Council 2018.
While every care is taken to ensure the accuracy of this map, South Burnett Regional Council makes no representations or warranties about its accuracy, reliability, completeness or suitability for any particular purpose and disclaims all responsibility and all liability (including without limitation, liability in negligence) for all expenses, losses, damage (including indirect or consequential damage) and costs which might incur as a result of the data being inaccurate or incomplete in any way and for any reason.

© The State of Queensland (Natural Resources and Mines) [2018].
Based on Cadastral Data provided with the permission of the Department of Natural Resources and Mines (Current as at January 2018). While every care is taken to ensure the accuracy of this data, the Department of Natural Resources and Mines makes no representations or warranties about its accuracy, reliability, completeness or suitability for any particular purpose and disclaims all responsibility and all liability (including without limitation, liability in negligence) for all expenses, losses, damages (including indirect or consequential damage) and costs which you might incur as a result of the data being inaccurate or incomplete in any way and for any reason.

Date: 22/08/2018 START DATE 01/07/2019

DATUM:
Geocentric Datum
of Australia 1994
(GDA94 - Zone 56) AMENDMENT DATE
AMENDMENT N°



LGIP-SW-Nanango



**LOCAL GOVERNMENT INFRASTRUCTURE PLAN
PLANS FOR TRUNK INFRASTRUCTURE
STORMWATER NETWORK**

EXISTING TRUNK DRAINAGE

- + Gully
- Bridge
- ⌋ Culvert
- Open Drain
- Pipe

FUTURE DRAINAGE

- ▨ Underground Stormwater Works

GENERAL

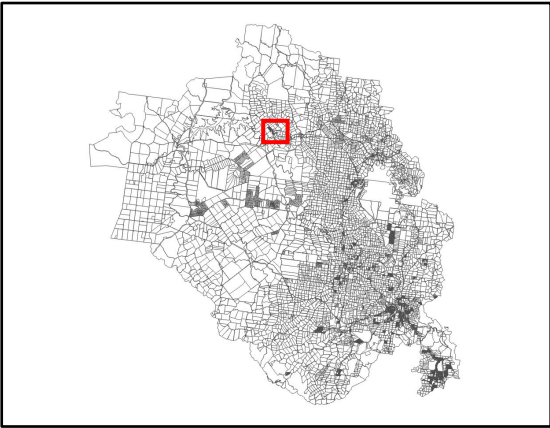
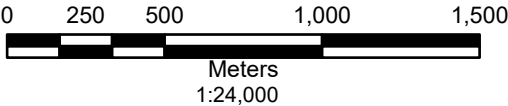
- Natural Drainage Cover
- ▨ Stormwater Service Catchment
- ▭ Property Boundary

© Copyright South Burnett Regional Council 2018
While every care is taken to ensure the accuracy of this map, South Burnett Regional Council makes no representations or warranties about its accuracy, reliability, completeness or suitability for any particular purpose and disclaims all responsibility and all liability (including without limitation, liability in negligence) for all expenses, losses, damage (including indirect or consequential damage) and costs which might incur as a result of the data being inaccurate or incomplete in any way and for any reason.

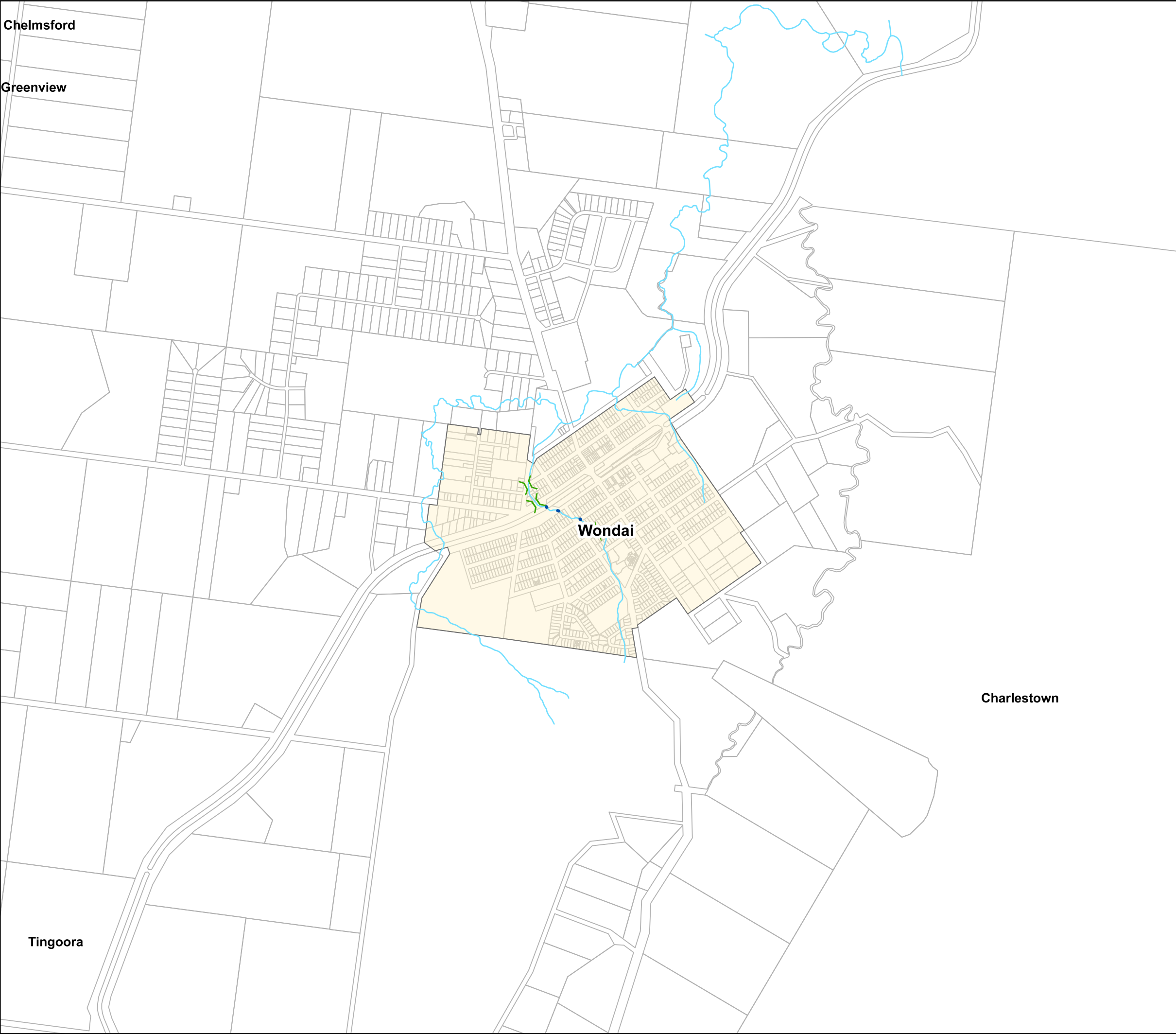
© The State of Queensland (Natural Resources and Mines) [2018].
Based on Cadastral Data provided with the permission of the Department of Natural Resources and Mines (Current as at January 2018). While every care is taken to ensure the accuracy of this data, the Department of Natural Resources and Mines makes no representations or warranties about its accuracy, reliability, completeness or suitability for any particular purpose and disclaims all responsibility and all liability (including without limitation, liability in negligence) for all expenses, losses, damages (including indirect or consequential damage) and costs which you might incur as a result of the data being inaccurate or incomplete in any way and for any reason.

Date: 22/08/2018 START DATE 01/07/2019

N
D
ATUM:
Geocentric Datum
of Australia 1994
(GDA94 - Zone 56)
AMENDMENT DATE
AMENDMENT N°



LGIP-SW-Proston



LOCAL GOVERNMENT INFRASTRUCTURE PLAN
PLANS FOR TRUNK INFRASTRUCTURE
STORMWATER NETWORK

EXISTING TRUNK DRAINAGE

- + Gully
- Bridge
- ⌵ Culvert
- Open Drain
- Pipe

FUTURE DRAINAGE

- ▨ Underground Stormwater Works

GENERAL

- Natural Drainage Cover
- ▨ Stormwater Service Catchment
- ▭ Property Boundary

© Copyright South Burnett Regional Council 2018
While every care is taken to ensure the accuracy of this map, South Burnett Regional Council makes no representations or warranties about its accuracy, reliability, completeness or suitability for any particular purpose and disclaims all responsibility and all liability (including without limitation, liability in negligence) for all expenses, losses, damage (including indirect or consequential damage) and costs which might incur as a result of the data being inaccurate or incomplete in any way and for any reason.

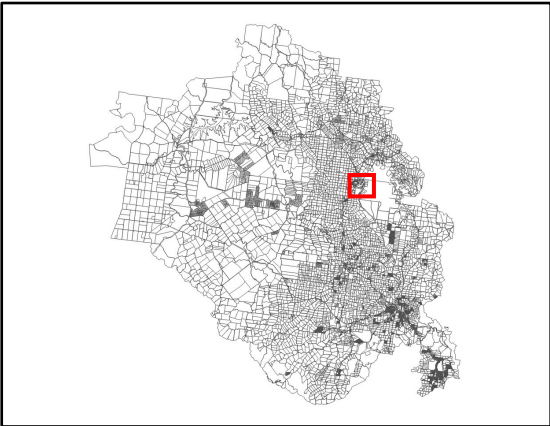
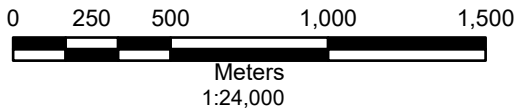
© The State of Queensland (Natural Resources and Mines) [2018].
Based on Cadastral Data provided with the permission of the Department of Natural Resources and Mines (Current as at January 2018). While every care is taken to ensure the accuracy of this data, the Department of Natural Resources and Mines makes no representations or warranties about its accuracy, reliability, completeness or suitability for any particular purpose and disclaims all responsibility and all liability (including without limitation, liability in negligence) for all expenses, losses, damages (including indirect or consequential damage) and costs which might incur as a result of the data being inaccurate or incomplete in any way and for any reason.

Date: 22/08/2018 START DATE 01/07/2019



DATUM:
Geocentric Datum
of Australia 1994
(GDA94 - Zone 56)

AMENDMENT DATE
AMENDMENT N°



LGIP-SW-Wondai